

## HONSBERG - LABO XF SERIES FLOW METER

Dynamic diaphragm (flap)

XF-020GMU080  
Flow sensor 3/4", 1-80 l/min, 0-10V

- For liquids up to 16 bar
- Flow from 1 l/min. to 80 l/min.
- Connection from 1/4" to 3/4"
- Housing in PPS or stainless



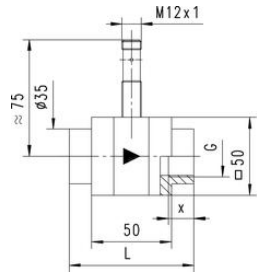
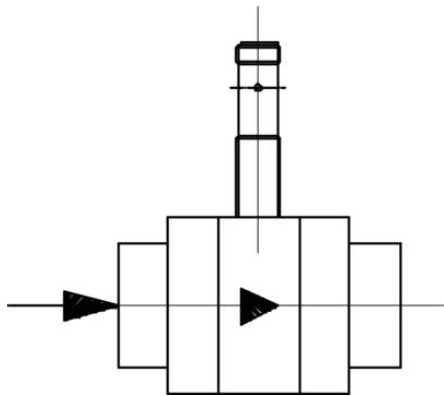
### PRODUCT DESCRIPTION

Model XF is a compact flow sensor in PPS plastic or stainless for water applications. Measurement takes place via a spring mounted metal plate which gives a rapid response time, low pressure drop, and high accuracy. The design with no moving parts makes it suitable for applications where this is a requirement. XF can be simply combined with Honsberg's Omni- or Flex technology.

### SPECIFICATIONS

Flow Max l/min Double	120 l/min
Flow Range Max	80 l/min
Flow Range Min	1 l/min
IP Class	IP67
Load Max	100 mA
Material of body	PPS
Material of connection	Nickel-plated brass
Material of seals	Viton
Material tinplate	Stainless steel 1.4031k
Power Consumption	20 mA
Pressure Range Max	16 bar
Temperature range of media from	0 °C
Temperature range of media to	70 °C
Type of flow component	Flow Measuring

<b>Weight</b>	0,37 kg
<b>Viscosity Max</b>	1 cSt
<b>Voltage DC max</b>	30 V
<b>Voltage DC min</b>	10 V



G"	L mm	X mm	Weight kg
1/4	74	12	0,60
3/8	74	12	0,60
1/2	78	14	0,60
3/4	82	16	0,65
1	82		0,70

PNP/ström-/spänning utgång

